



360°

COB LED NEON FLEX

LED-NEON-360D





Features

- Color options: white
- Superior design with exquisite craftsmanship ensure stable and reliable performance.
- 360° light-emitting with uniform light.
- Bendable with good flexibility, strong weather resistance.
- Single color supports PWM, 0-10V, and DALI dimming.
- Warranty: 5 years indoor, 3 years outdoor.
- Customization: multiple spec options, can be customized upon requirements.



Optical & Electrical Parameters

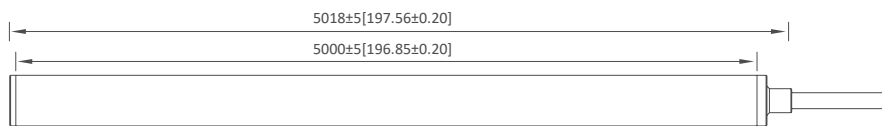
Model No.	Voltage	Ra	Color	Lm/m	Lm/W	W/m
LED-NEON-360D-XXXXK	24V DC	>90	2700K	1062	62	16
			3500K	1158	68	
			5500K	1085	67	

Model No.	LED QTY (pcs/m)	Standard Run	Working Temperature	Storage Temperature
Single color	640	5000mm	-20~+60°C	-20~+70°C

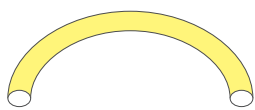
Cutttable every 50mm - cut Neon, remove LED strip and cut where indicated and push LED strip back into Neon casing and seal

Profile Drawings

Unit:mm[inch]

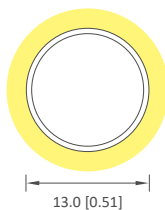


Bend direction

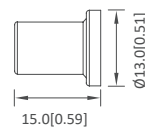


∅ 120[4.72]

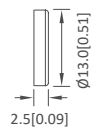
Sectional view



Front cap



Closing-end cap

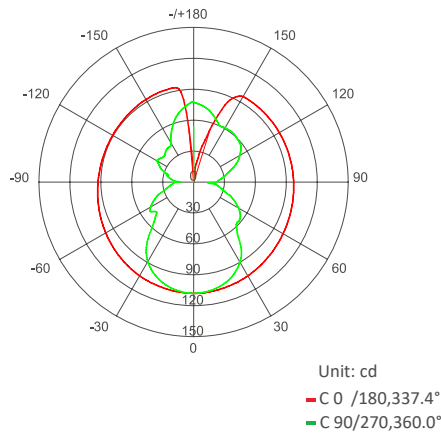


Note:

It is not recommended for customers to cut by themselves.

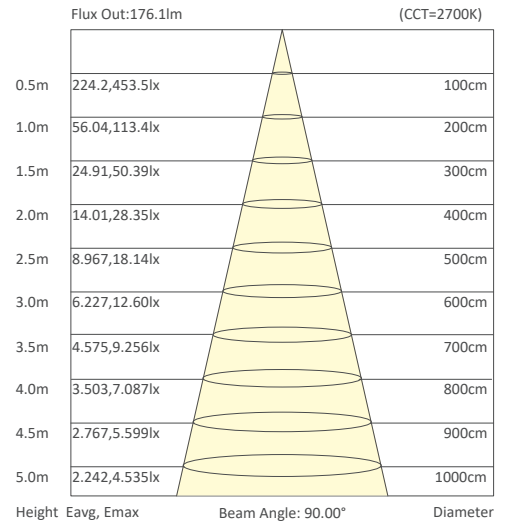
Within 5m, customizable lengths are multiples of the min cuttable length.

Luminous Intensity Distribution Diagram



AVERAGE BEAM ANGLE (50%): 348.7°

Average Illumination



Note: The above two pictures are tested with the sample LED-NEON-360D at 2700K. For more info, please contact sales rep.

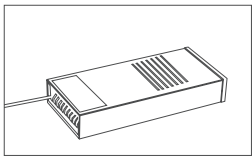
The error of luminous flux and power is ± 10%;

Recommended power supply upon working length

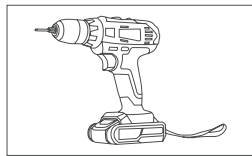
Single color

Working Length	Measured Current	Rated Voltage	Measured Power	Recommended Power Supply	Power Supply Mode
1m	0.70 A	24V DC	16.8 W	25 W	Single Feed
5m	3.00 A	24V DC	72.0 W	100 W	Single Feed

Products and Tools



LED power supply

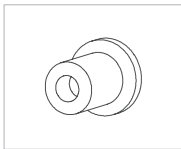


Electric drill



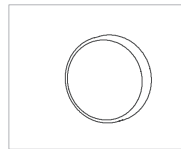
Controller (If needed)

Product accessories



LED-NEON-ECH

Item: Front cap
 Dimensions L*W*H: ∅ 13*15mm
 Quantity (5m): 2pcs
 Free/Optional: Optional



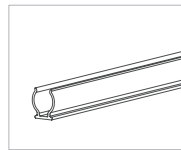
LED-NEON-EC

Item: Closing-end cap
 Dimensions L*W*H: ∅ 13*2.5mm
 Quantity (5m): 2pcs
 Free/Optional: Optional



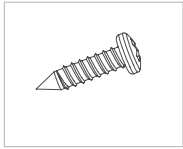
LED-NEON-FXC

Item: Clip
 Dimensions L*W*H: 16*28*14.2mm
 Quantity (5m): --
 Free/Optional: Optional

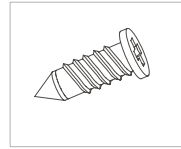


LED-NEON-CH1

Item: Groove
 Dimensions L*W*H: 1000*12*17mm
 Quantity (5m): --
 Free/Optional: Optional



Item: Screw (For fixing clips)
 Dimensions L*W*H: 4*13mm
 Quantity (5m): --
 Free/Optional: Optional

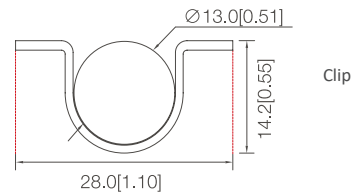
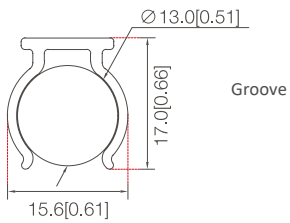


Item: Screw (For fixing grooves)
 Dimensions: 3*16mm
 Quantity (5m): --
 Free/Optional: Optional



LED-NEON-GL
 Item: Silicone Glue
 Dimensions: 45g/pc
 Quantity (5m): --
 Free/Optional: Optional

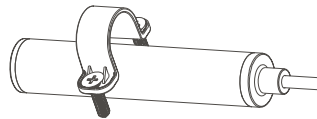
Profile Drawings (neon + profile)



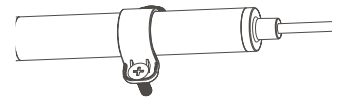
Installation



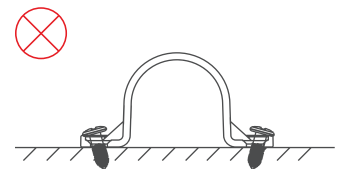
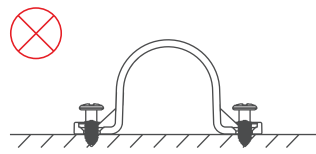
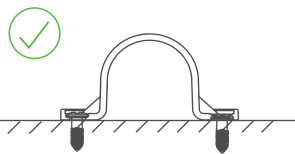
Put the neon strip on the installation surface



Fix the plastic clips on the neon light



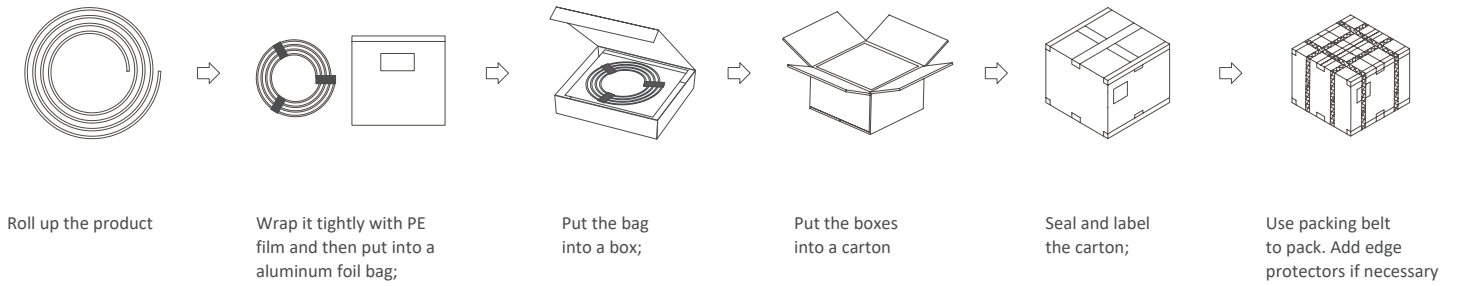
Firmly screw the neon light on the installation surface



Notes:

- The screws must be vertical to the mounting surface and be fastened, as shown in the figure on the right; Please choose suitable operation steps according to the actual needs;
- During mounting, please pay attention to the min bending diameter, and best to use original factory accessories; More information, please feel free to consult us;

Packaging Information

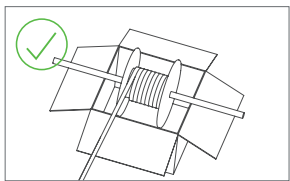


Packaging information

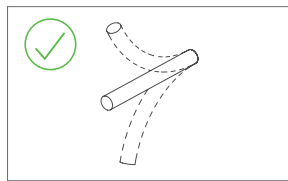
Model No.	Product Size L*W*H (mm)	Carton Size (mm)	Meter/Reel	Reel/Carton	Gross Weight (kg)
Single color	5000*13*13	390*390*325	5	16	14.10(1± 10%)

- For other customized length packaging, please ask our sales rep.
- The above-mentioned packaging quantity and weight are only for the illustrated packaging method. For other packaging methods, the packaging quantity and weight will be different. The actual weight is subject to the actual product.

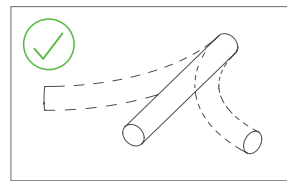
Warning Mark



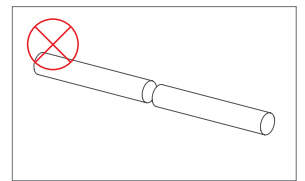
Insert a stick on the reel and place it on the packing box, and rotate the reel to get the product.



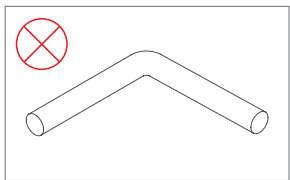
Correct usage



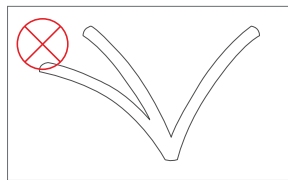
Correct usage



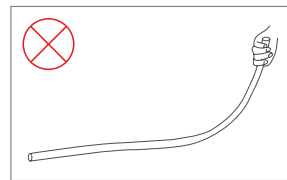
Do not make cuts.



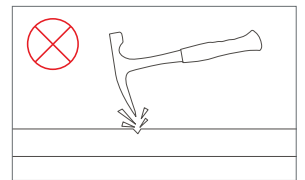
Do not bend at right angles



Do not bend many times, for it can endanger electronic lines.



Do not throw or pull when taking products



Avoid touching sharp objects

Note: Please pay attention to above warnings when using;
Our company will not be held responsible for any quality hazards caused by damage to the product due to contact with sharp objects.

Warning

- Do not disassemble or retrofit the light. Do not touch the surface of the light with a sharp object.
- Do not do live-line working during installation, especially for high voltage product.
- Do not use any organic chemical solvents.
- Use neutral glass adhesive to fix this product and it needs to be dried 4 hours in the open environment after operation.
- Treat the ends and the circuit connection points that are not connected to the main line with insulation, waterproof, and anti-corrosion in the installation.
- Use 18AWG (0.75mm² cross-sectional area) or thicker core wire to avoid adverse consequences caused by overheating, if the power cable need to lengthen.
- Make sure the input voltage meets the requirements and lines are connected correctly before lighting on
- This product is for signage, and do not use as general lighting.
- Series connection within the max run.
- The length of the power cable between the power supply and the led strip should not exceed 2 meters. Otherwise, large circuit loss will lead to inconsistent brightness.
- Installation, maintenance and repair should be operated by a qualified technician.

Attentions before installation

- Before installation, check that the product parameters are consistent with the requirements (Seeing product specifications or product labels) Load voltage, current, power and power supply should be matched with the product.
- Follow the instructions of wiring diagram (first connect the load and then the power supply) to avoid short circuit
- Make sure the correct connection of positive and negative poles between products and power supply. Otherwise, the light will not be on. Make sure the power cord firmly screwed into the terminal and it should not be pulled out by hands.
- The terminal should have waterproof and anti-corrosive treatment.

Statements and Recycling

Statements

- Repair should be operated by a qualified technician or supplier, if the external circuit or main line of this product is damaged. The parameters given in this manual are typical values and for reference only
- All illustrations and drawings in this manual are for reference.
- This product is subject to change without notice.

Recycling

- LED lighting products belongs to electronic products, please do recycling treatment according to the relevant WEEE directives.

Version	Content	Date
A1.1	Update: Basic Parameters	2024-1-3